



BLACKROCK KELSO CAPITAL

Investor Presentation

August 2011

Forward Looking Statements

These materials and any presentation of which they form a part are neither an offer to sell, nor a solicitation of an offer to purchase, an interest in BlackRock Kelso Capital Corporation (“BKCC,” the “Company,” or “BlackRock Kelso Capital”). Such an offer or solicitation can only be made by way of the Company’s prospectus and otherwise in accordance with applicable securities laws.

The summary descriptions and other information included herein, and any other materials provided to you by the Company or its representatives, are intended only for informational purposes and convenient reference. The information contained herein is not intended to provide, and should not be relied upon for, accounting, legal or tax advice or investment recommendations. Before making an investment decision with respect to the Company, investors are advised to carefully review the prospectus to review the risk factors described therein, and to consult with their tax, financial, investment and legal advisors. These materials and the presentations of which they are a part, and the summaries contained herein, do not purport to be complete, and are qualified in their entirety by reference to the more detailed discussion contained in the prospectus, and the Company’s documentation.

Recipients may not reproduce these materials or transmit them to third parties. These materials are not intended for distribution to or use by any person or entity in any jurisdiction or country where such distribution or use would be contrary to applicable law or regulations.

No representation or warranty, express or implied, is made as to the accuracy or completeness of the information contained herein, and nothing shall be relied upon as a promise or representation as to the future performance of the Company.

This presentation may include forward-looking statements. These forward-looking statements include comments with respect to our objectives and strategies and results of our operations. However, by their nature, these forward-looking statements involve numerous assumptions, uncertainties and opportunities, both general and specific. The risk exists that these statements may not be fulfilled. We caution readers of this presentation not to place undue reliance on these forward-looking statements as a number of factors could cause future company results to differ materially from these statements.

Forward-looking statements may be influenced in particular by factors such as fluctuations in interest rates and stock indices, the effects of competition in the areas in which we operate, and changes in economic, political and regulatory considerations. We caution that the foregoing list is not exhaustive.

When relying on forward-looking statements to make decisions, investors should carefully consider the aforementioned factors as well as other uncertainties and events. Any performance data quoted in this document represents past performance and does not guarantee future results. The performance stated may have been due to extraordinary market conditions, which may not be duplicated in the future. Current performance may be lower or higher than the performance data quoted. We do not undertake to update our forward-looking statements unless required by law.

Agenda

I.	BlackRock Kelso Capital Overview	3
II.	Financial Summary	8
III.	Current Market Environment	17
IV.	Notes to the Investor Presentation	21



I. BlackRock Kelso Capital Overview

Market-Leading Platform

Successful Track Record of Middle Market Investing

- ✓ Dedicated team of investment professionals with long-standing relationships and a proactive direct origination focus
- ✓ Industry-leading, “hands-on” diligence approach focusing on long-term business fundamentals and capital preservation
- ✓ Active support of world-class investment partners in BlackRock, Inc. and the Kelso Principals
- ✓ Completed 120 investments in middle market companies since inception⁽¹⁾
- ✓ Declared \$7.68 per share in dividends to shareholders since inception⁽²⁾

Business Development Company Fund Structure

- ✓ Conservatively structured and highly regulated asset class (maximum one-to-one leverage allowance)
- ✓ Highly visible investment income and dividend generation
- ✓ Mark-to-market accounting requirements ensure accurate and timely valuations for investors
- ✓ Well capitalized with \$437.1 million in excess asset coverage^(1,13)

Investor-friendly Fee Structure

- ✓ Shareholder-friendly fee arrangement resulting from performance incentive fee subject to both a hurdle and a high water mark structure
- ✓ 50% catch-up provision favors investors – the Investment Advisor does not earn full incentive fees until investors have received a 13.3% return
- ✓ Lower costs than many finance competitors and internally managed BDCs
- ✓ Transparent payment structure

Investment Selection Criteria

Focus on Value and Cash Flow

- ✓ Premium on fundamental analysis and value from an investor's perspective
- ✓ Invest at low multiples of operating cash flow in companies profitable at the time of investment on an operating cash flow basis
- ✓ Typically do not invest in start-up companies or companies having speculative business plans

Competitive Position in Industry

- ✓ Companies that have strong market positions and are well suited to capitalize on growth opportunities
- ✓ Companies that demonstrate significant competitive advantages that aid to protect their market position and profitability

Experienced Management

- ✓ Generally require that portfolio companies have an experienced management team
- ✓ Generally require portfolio companies to have in place proper incentives to induce management to succeed and to act in concert with investor interests, which may include a significant equity stake

Investment Exit Strategy

- ✓ Internally generated cash flow for debt repayment
- ✓ Strategic acquisition by other industry participants
- ✓ Initial public offering of common stock or another capital market transaction
- ✓ Exit equity investments via repurchases by the company and sales pursuant to M&A

Liquidation Value of Assets

- ✓ Enterprise value focus
- ✓ Prospective liquidation value of the assets that collateralize loans
- ✓ Emphasize both tangible assets, such as accounts receivable, inventory, equipment and real estate, as well as intangible assets, such as intellectual property, customer lists, networks, and databases

Thorough Investment Process

Due Diligence

Review financials, business plan, sponsor's due diligence and industry analysis
Investment committee provides guidance and resources for due diligence process

Visit management, sponsor, and company facilities
Investment committee provides senior transaction and industry resources

Access management teams and other experts
Leverage the resources of our partners

Conduct competitive analysis, collateral analysis, and determine exit strategy
Evaluate from an equity owner's perspective

Engage lawyers and consultants to do additional research and diligence
Review due diligence findings

Post approval, BlackRock Kelso Capital works to structure investments quickly and effectively

Comprehensive Portfolio Management

Detailed review and rating process

- Review financial statements and reports
- Evaluate adherence to business plan and covenants
- Compare to other industry participants

Financial performance of existing portfolio companies is evaluated by the deal team on at least a quarterly basis

- Monthly and/or quarterly financials are analyzed by the deal team
- Discussions with management are conducted to review the performance of the businesses
- In many cases, BKCC maintains observation rights or seats on the portfolio companies' boards of directors

Update memos are prepared for each portfolio company by the respective deal team at least quarterly

- Memos are reviewed at the weekly investment professionals' meeting

A separate investment rating meeting is held and attended by all transaction professionals each quarter

- Each investment is reviewed by its primary deal team and given a suggested rating level to be discussed among all transaction professionals
- At the conclusion of discussion, and subject to the approval of senior management, the chief financial officer records the internal investment ratings for review by the Board of Directors

All investments that are rated at levels other than the highest rating are reviewed on a weekly basis by the transaction professionals and management



II. Financial Summary

Financial and Portfolio Summary

Financial Highlights

Amounts shown on per share basis; share count in millions

	Three Months Ending				
	6/30/11	3/31/11	12/31/10	9/30/10	6/30/10
Net Investment Income ⁽³⁾	\$ 0.35	\$ 0.20	\$ 0.03	\$ 0.26	\$ 0.36
Net Realized Gains (Losses) ⁽³⁾	\$ (0.01)	\$ (0.59)	\$ (0.39)	\$ 0.02	\$ (0.38)
Net Unrealized Gains (Losses) ⁽³⁾	\$ 0.19	\$ 0.63	\$ 0.39	\$ (0.03)	\$ 0.41
Net Income ⁽³⁾	\$ 0.53	\$ 0.25	\$ 0.03	\$ 0.25	\$ 0.39
Net Asset Value at End of Period ⁽⁴⁾	\$ 9.83	\$ 9.56	\$ 9.62	\$ 9.76	\$ 9.83
Dividends Declared ⁽³⁾	\$ 0.26	\$ 0.32	\$ 0.32	\$ 0.32	\$ 0.32
Basic and Diluted Weighted Average Shares Outstanding	73.0	72.8	70.9	65.5	57.5
Total Shares Outstanding at End of Period	73.0	72.8	72.6	65.5	65.4

Portfolio Summary

\$ in thousands	6/30/11	3/31/11	12/31/10	9/30/10	6/30/10
Investment Portfolio at Cost ⁽⁵⁾	\$ 993,646	\$ 980,490	\$ 985,678	\$ 966,827	\$ 886,663
Investment Portfolio at Fair Value	\$ 947,656	\$ 921,188	\$ 880,086	\$ 833,747	\$ 753,591
Fair Value % Cost	95.4%	94.0%	89.3%	86.2%	85.0%
Number of Portfolio Companies	55	52	50	51	51
Average Investment Size at Cost	\$ 18,066	\$ 18,856	\$ 19,714	\$ 18,957	\$ 17,386
Yield on Income Producing Capital at Cost	11.5%	11.4%	10.9%	10.5%	10.5%
Yield on Senior Secured Loans at Cost	11.1%	10.8%	10.1%	9.4%	10.0%
Yield on Other Debt Securities at Cost	11.9%	12.2%	12.1%	11.9%	11.3%
Total Investment Portfolio at Fair Value⁽⁶⁾					
Senior Secured Loans & Notes	68.1%	62.2%	60.6%	61.1%	70.1%
Unsecured & Subordinated Debt	19.4%	25.0%	26.1%	26.3%	17.4%
Preferred & Common Equity & Warrants	12.5%	12.8%	13.3%	12.6%	12.5%

Portfolio Activity

\$ in thousands	Three Months Ending				
	6/30/11	3/31/11	12/31/10	9/30/10	6/30/10
New Investments at Cost	\$ 81,575	\$ 39,551	\$ 84,240	\$ 177,428	\$ 127,847
Sales, Repayments, Other Exits at Cost	(71,375)	(4,047)	(41,038)	(100,206)	(181,349)
Net New Investments at Cost	\$ 10,200	\$ 35,505	\$ 43,202	\$ 77,223	\$ (53,502)
New Portfolio Company Investments	4	2	3	4	1
Portfolio Company Exits	1	-	4	4	5

Please see Notes to the Investor Presentation on page 22

Select Historical Financial Information

Financial History

<i>\$ in thousands, except per share data</i>	Three Months Ending									Full Year	
	6/30/11	3/31/11	12/31/10	9/30/10	6/30/10	3/31/10	12/31/09	9/30/09	6/30/09	12/31/10	12/31/09
Net Investment Income Before Incentive Fees	\$ 25,739	\$ 14,877	\$ 16,968	\$ 16,811	\$ 20,421	\$ 20,759	\$ 21,803	\$ 21,782	\$ 25,535	\$ 74,959	\$ 92,871
Net Investment Income Before Incentive Fees per share ⁽³⁾	\$ 0.35	\$ 0.20	\$ 0.24	\$ 0.26	\$ 0.36	\$ 0.37	\$ 0.39	\$ 0.39	\$ 0.46	\$ 1.20	\$ 1.66
Net Investment Income	\$ 25,739	\$ 14,877	\$ 2,354	\$ 16,811	\$ 20,421	\$ 20,265	\$ 4,984	\$ 21,782	\$ 25,535	\$ 59,851	\$ 76,053
Net Investment Income per share ⁽³⁾	\$ 0.35	\$ 0.20	\$ 0.03	\$ 0.26	\$ 0.36	\$ 0.36	\$ 0.09	\$ 0.39	\$ 0.46	\$ 0.96	\$ 1.36
Net Investment Income, as adjusted ⁽⁷⁾	\$ 20,897	\$ 14,606	\$ 13,777	\$ 13,020	\$ 16,290	\$ 16,764	\$ 18,499	\$ 17,585	\$ 20,834	\$ 59,851	\$ 76,053
Adjusted Net Investment Income per share	\$ 0.29	\$ 0.20	\$ 0.19	\$ 0.20	\$ 0.28	\$ 0.30	\$ 0.33	\$ 0.31	\$ 0.37	\$ 0.96	\$ 1.36
Net Realized / Unrealized Gains (Losses)	\$ 13,179	\$ 3,138	\$ 62	\$ (496)	\$ 1,914	\$ 10,218	\$ 11,355	\$ 9,364	\$ (1,714)	\$ 11,699	\$ (8,813)
Net Realized / Unrealized Gains (Losses) per share ⁽³⁾	\$ 0.18	\$ 0.04	\$ 0.00	\$ (0.01)	\$ 0.03	\$ 0.18	\$ 0.20	\$ 0.17	\$ (0.03)	\$ 0.19	\$ (0.16)
Net Income	\$ 38,918	\$ 18,015	\$ 2,416	\$ 16,316	\$ 22,335	\$ 30,483	\$ 16,339	\$ 31,146	\$ 23,822	\$ 71,550	\$ 67,240
Net Income per share ⁽³⁾	\$ 0.53	\$ 0.25	\$ 0.03	\$ 0.25	\$ 0.39	\$ 0.54	\$ 0.29	\$ 0.55	\$ 0.43	\$ 1.14	\$ 1.20
Dividends Declared	\$ 18,983	\$ 23,354	\$ 23,222	\$ 20,964	\$ 18,157	\$ 18,112	\$ 18,072	\$ 9,015	\$ 8,903	\$ 80,456	\$ 44,821
Dividends Declared per share ⁽³⁾	\$ 0.26	\$ 0.32	\$ 0.32	\$ 0.32	\$ 0.32	\$ 0.32	\$ 0.32	\$ 0.16	\$ 0.16	\$ 1.28	\$ 0.80
Total Net Assets	\$ 717,617	\$ 695,433	\$ 698,480	\$ 639,078	\$ 642,416	\$ 552,954	\$ 539,563	\$ 540,376	\$ 514,032	\$ 698,480	\$ 539,563
Net Asset Value per share ⁽⁴⁾	\$ 9.83	\$ 9.56	\$ 9.62	\$ 9.76	\$ 9.83	\$ 9.77	\$ 9.55	\$ 9.59	\$ 9.24	\$ 9.62	\$ 9.55
Book Debt / Book Equity Ratio	0.38x	0.40x	0.24x	0.32x	0.23x	0.46x	0.55x	0.64x	0.73x	0.24x	0.55x
Book Debt / Book Equity Ratio, Net of Available Cash ⁽⁸⁾	0.32x	0.32x	0.24x	0.24x	0.19x	0.45x	0.54x	0.64x	0.73x	0.24x	0.54x

Please see Notes to the Investor Presentation on page 22

Select Historical Portfolio Information

Portfolio History

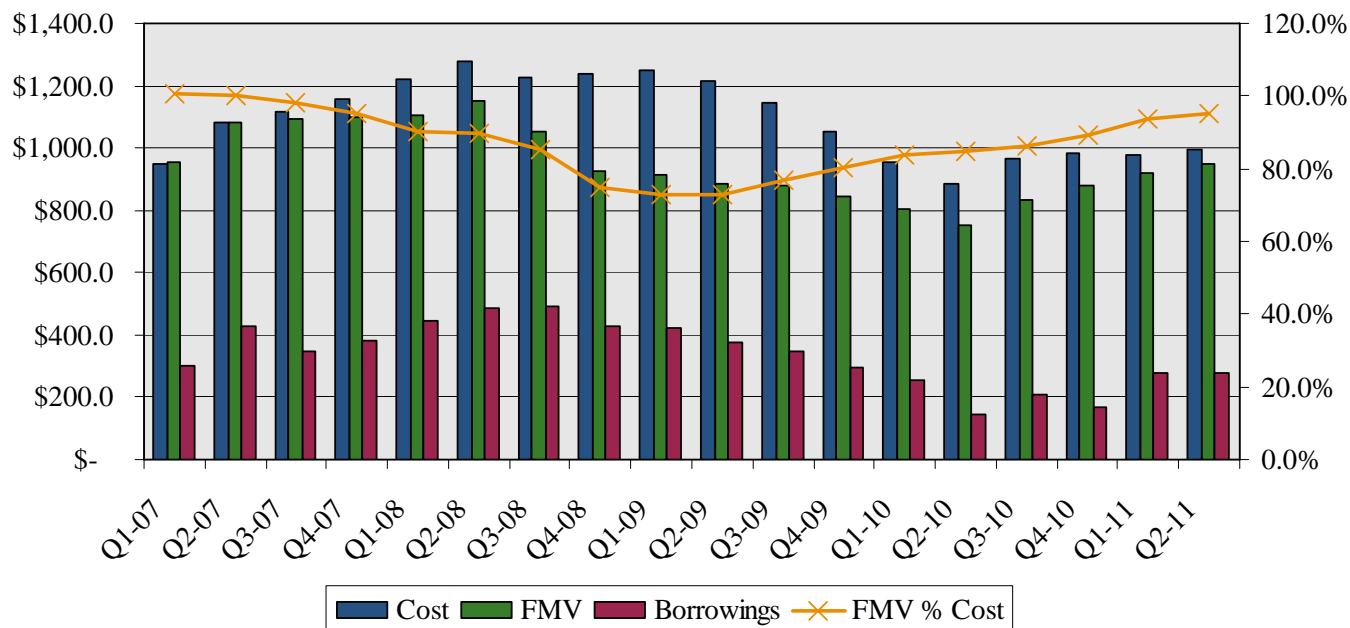
*\$ in thousands, except per share data
As of and for the Three Months Ending,*

	6/30/11	3/31/11	12/31/10	9/30/10	6/30/10	3/31/10	12/31/09	9/30/09
Investment Portfolio at Cost ⁽⁵⁾	\$ 993,646	\$ 980,490	\$ 985,678	\$ 966,827	\$ 886,663	\$ 957,362	\$ 1,054,820	\$ 1,144,893
Investment Portfolio at Fair Value ⁽⁵⁾	\$ 947,656	\$ 921,188	\$ 880,086	\$ 833,747	\$ 753,591	\$ 803,329	\$ 846,742	\$ 880,677
Fair Value % Cost	95.4%	94.0%	89.3%	86.2%	85.0%	83.9%	80.3%	76.9%
Number of Portfolio Companies	55	52	50	51	51	55	57	60
Average Investment Size at Cost	\$ 18,066	\$ 18,856	\$ 19,714	\$ 18,957	\$ 17,386	\$ 17,407	\$ 18,506	\$ 19,082
Weighted Average Yield on Invested Capital at Cost	11.5%	11.4%	10.9%	10.5%	10.5%	11.6%	11.2%	10.9%
Weighted Average Yield on Senior Secured Loans at Cost	11.1%	10.8%	10.1%	9.4%	10.0%	10.3%	9.4%	10.0%
Weighted Average Yield on Other Debt Securities at Cost	11.9%	12.2%	12.1%	11.9%	11.3%	13.9%	14.2%	13.2%
Total Investment Portfolio at Fair Value⁽⁶⁾								
Senior Secured Loans & Notes	68.1%	62.2%	60.6%	61.1%	70.1%	66.8%	64.8%	64.6%
Unsecured & Subordinated Debt	19.4%	25.0%	26.1%	26.3%	17.4%	26.3%	30.6%	31.1%
Preferred & Common Equity & Warrants	12.5%	12.8%	13.3%	12.6%	12.5%	7.0%	4.6%	4.2%
New Investments at Cost	\$ 81,575	\$ 39,551	\$ 84,240	\$ 177,428	\$ 127,847	\$ 16,442	\$ 8,585	\$ 10,983
Sales, Repayments, Other Exits at Cost	(71,375)	(4,047)	(41,038)	(100,206)	(181,349)	(72,676)	(55,976)	(28,340)
Net New Investments at Cost	\$ 10,200	\$ 35,505	\$ 43,202	\$ 77,223	\$ (53,502)	\$ (56,235)	\$ (47,391)	\$ (17,357)
Number of New Portfolio Company Investments	4	2	3	4	1	-	-	-
Number of Portfolio Company Exits	1	-	4	4	5	2	3	2

Please see Notes to the Investor Presentation on page 22

Portfolio Evolution

Quarterly Cost / FMV / Borrowings^(5,9)



	Q1-07	Q2-07	Q3-07	Q4-07	Q1-08	Q2-08	Q3-08	Q4-08	Q1-09	Q2-09	Q3-09	Q4-09	Q1-10	Q2-10	Q3-10	Q4-10	Q1-11	Q2-11
Cost	\$ 949.9	\$ 1,081.9	\$ 1,115.1	\$ 1,155.4	\$ 1,222.7	\$ 1,279.8	\$ 1,229.1	\$ 1,235.8	\$ 1,251.2	\$ 1,216.2	\$ 1,144.9	\$ 1,054.8	\$ 957.4	\$ 886.7	\$ 966.8	\$ 985.7	\$ 980.5	\$ 993.6
FMV ⁽⁵⁾	955.0	1,081.3	1,095.7	1,098.3	1,103.5	1,149.2	1,051.1	926.8	912.9	884.9	880.7	846.7	803.3	753.6	833.7	880.1	921.2	947.7
Borrowings	300.0	430.8	346.4	381.3	444.9	484.0	491.0	426.0	421.5	376.0	347.5	296.0	253.5	145.0	205.5	170.0	275.0	275.0
FMV % Cost	100.5%	99.9%	98.3%	95.1%	90.3%	89.8%	85.5%	75.0%	73.0%	72.8%	76.9%	80.3%	83.9%	85.0%	86.2%	89.3%	94.0%	95.4%
Borrowings % FMV	31.4%	39.8%	31.6%	34.7%	40.3%	42.1%	46.7%	46.0%	46.2%	42.5%	39.5%	35.0%	31.6%	19.2%	24.6%	19.3%	29.9%	29.0%

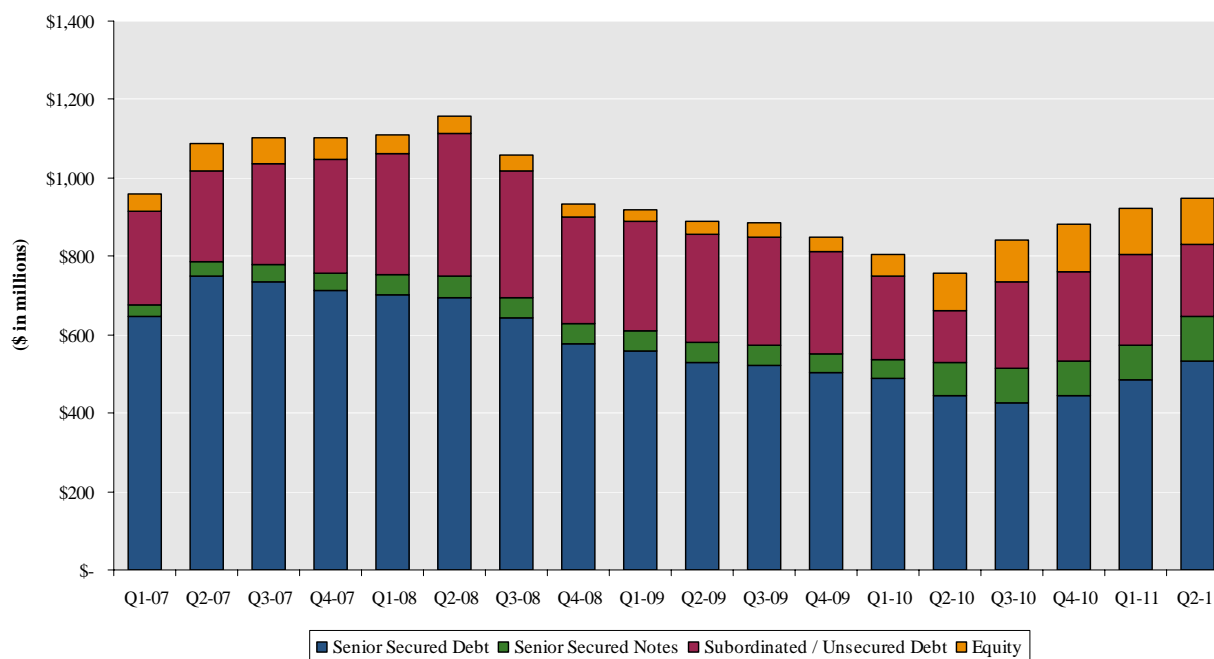
Please see Notes to the Investor Presentation on page 22

Defensive Portfolio Composition

BKCC's senior debt focus and conservative investment composition have helped its portfolio performance during the current recession

- As of June 30, 2011, senior debt comprised 68.1% of the total portfolio at fair market value

Portfolio Composition by Investment Type⁽⁶⁾



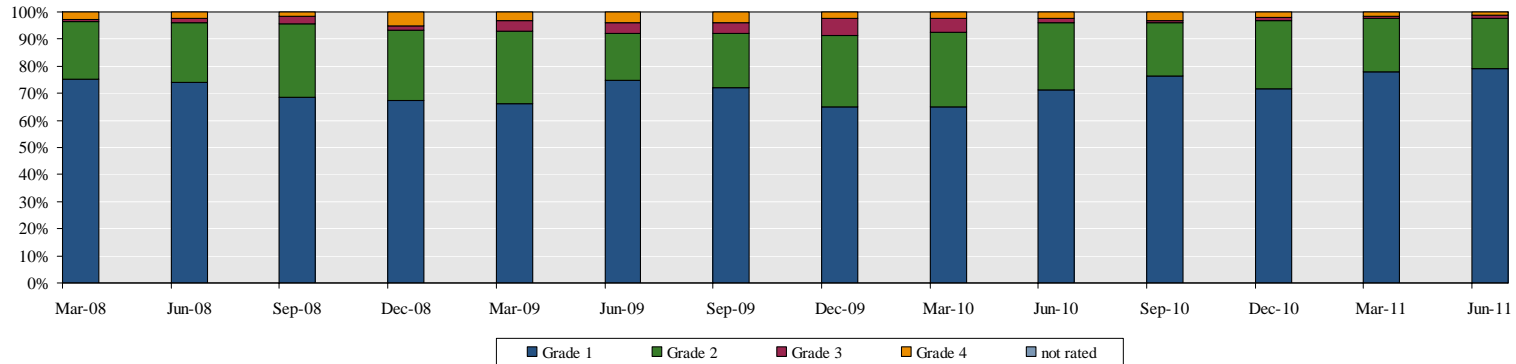
	Q1-07	Q2-07	Q3-07	Q4-07	Q1-08	Q2-08	Q3-08	Q4-08	Q1-09	Q2-09	Q3-09	Q4-09	Q1-10	Q2-10	Q3-10	Q4-10	Q1-11	Q2-11
Senior Secured Debt	\$ 647.2	\$ 748.1	\$ 734.9	\$ 713.2	\$ 702.9	\$ 695.4	\$ 642.3	\$ 576.0	\$ 558.2	\$ 528.1	\$ 520.1	\$ 503.2	\$ 489.8	\$ 443.4	\$ 427.6	\$ 444.8	\$ 485.2	\$ 532.6
Senior Secured Notes	29.6	37.4	45.0	44.8	51.4	52.5	51.5	52.3	51.3	52.3	51.7	48.4	48.3	86.9	86.5	88.3	88.1	112.6
Subordinated / Unsecured Debt	236.9	232.5	257.5	289.1	306.9	363.9	324.0	271.7	280.1	276.6	275.7	260.2	211.6	132.0	221.0	228.3	230.4	184.1
Equity	46.1	69.3	64.0	56.6	47.8	44.0	39.3	32.1	28.4	32.4	37.5	38.9	56.4	94.5	106.0	118.7	117.5	118.4
Total⁽⁵⁾	\$ 959.8	\$ 1,087.3	\$ 1,101.3	\$ 1,103.8	\$ 1,109.0	\$ 1,155.8	\$ 1,057.1	\$ 932.1	\$ 917.9	\$ 889.5	\$ 884.9	\$ 850.7	\$ 806.0	\$ 756.8	\$ 841.1	\$ 880.1	\$ 921.2	\$ 947.7
	Q1-07	Q2-07	Q3-07	Q4-07	Q1-08	Q2-08	Q3-08	Q4-08	Q1-09	Q2-09	Q3-09	Q4-09	Q1-10	Q2-10	Q3-10	Q4-10	Q1-11	Q2-11
% Senior Debt	70.5%	72.2%	70.8%	68.7%	68.0%	64.7%	65.6%	67.4%	66.4%	65.3%	64.6%	64.8%	66.8%	70.1%	61.1%	60.6%	62.2%	68.1%
% Sub Debt	24.7%	21.4%	23.4%	26.2%	27.7%	31.5%	30.6%	29.1%	30.5%	31.1%	31.1%	30.6%	26.3%	17.4%	26.3%	25.9%	25.0%	19.4%
% Equity	4.8%	6.4%	5.8%	5.1%	4.3%	3.8%	3.7%	3.4%	3.1%	3.6%	4.2%	4.6%	7.0%	12.5%	12.6%	13.5%	12.8%	12.5%

Please see Notes to the Investor Presentation on page 22

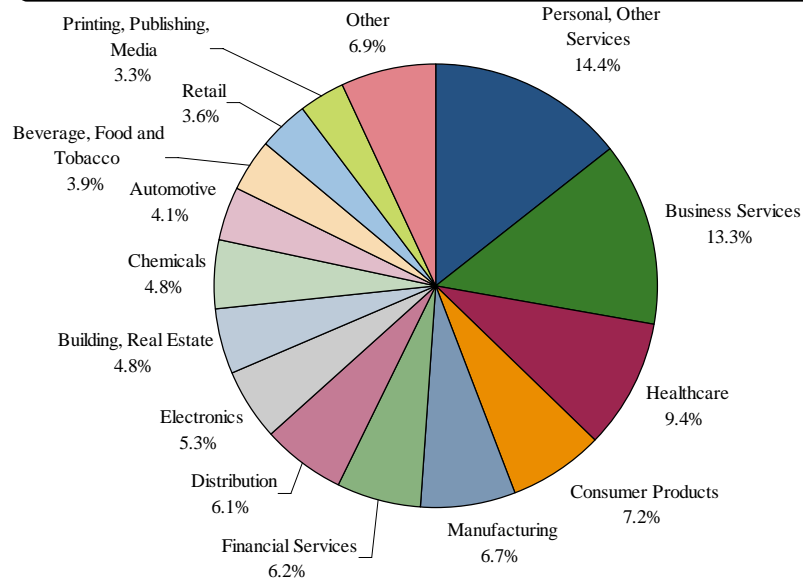
Conservatively Positioned Portfolio

Portfolio Composition by Investment Rating at Fair Market Value⁽¹⁾

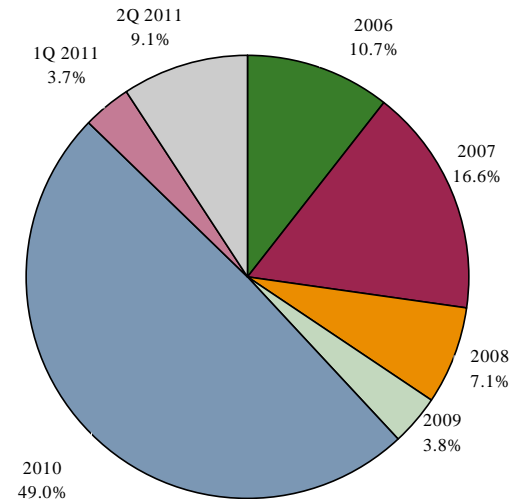
Portfolio Ratings by Market Value Over Time



Portfolio Composition by Industry at Fair Market Value⁽¹⁾



Portfolio Composition by Vintage^(1,10)



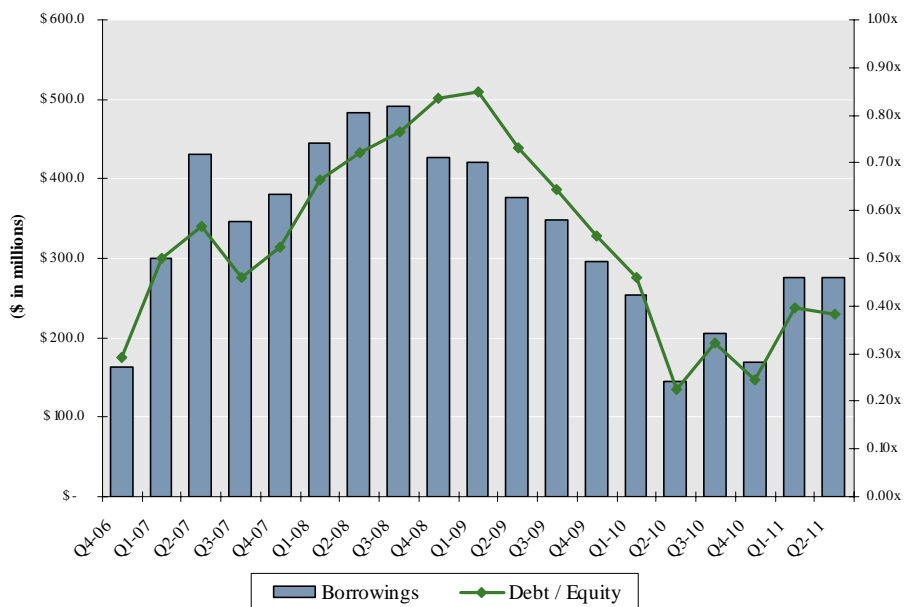
Please see Notes to the Investor Presentation on page 22

Increased Liquidity and Investment Capacity

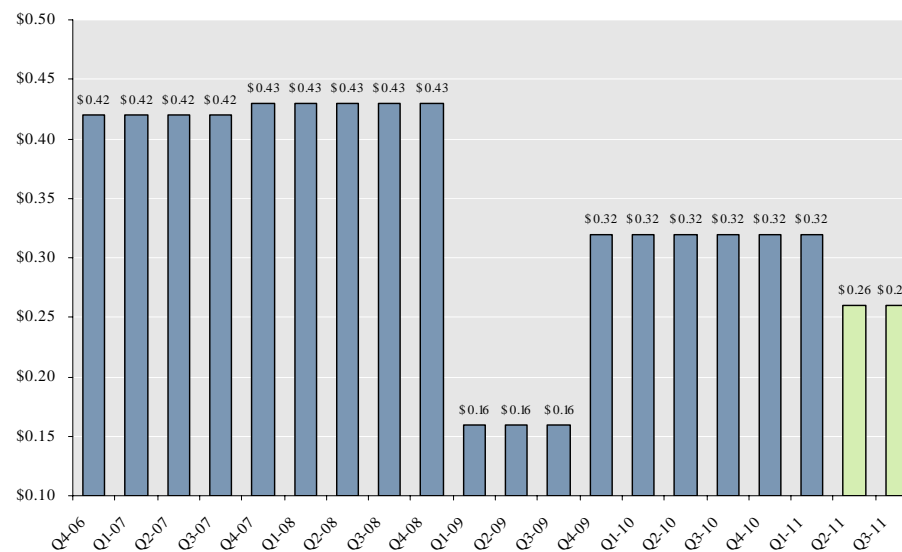
BKCC continues to pursue a conservative strategy of capital preservation

- Conservative dividend distribution policy
- \$437.1 million in excess asset coverage (1:1 test) and \$336.7 million in borrowing base availability as of June 30, 2011⁽¹³⁾

Quarterly Borrowings



Quarterly Dividends (\$ Per Share)



BKCC has significant capacity to take advantage of new investment opportunities in today's market

Portfolio Summary

For the quarters ending

	Dec-07	Mar-08	Jun-08	Sep-08	Dec-08	Mar-09	Jun-09	Sep-09	Dec-09	Mar-10	Jun-10	Sep-10	Dec-10	Mar-11	Jun-11
New Investments at Cost	\$ 76.2	\$ 94.6	\$ 80.0	\$ 8.7	\$ 13.9	\$ 15.3	\$ 11.9	\$ 11.0	\$ 8.6	\$ 16.4	\$ 127.8	\$ 177.4	\$ 84.2	\$ 39.6	\$ 81.6
Senior Secured Debt	713.2	702.9	695.4	642.3	576.0	558.2	528.1	520.1	503.2	489.8	443.4	427.6	450.3	485.2	532.6
Senior Secured Notes	44.8	51.4	52.5	51.5	52.3	51.3	52.3	51.7	48.4	48.3	86.9	86.5	88.3	88.1	112.6
Subordinated / Unsecured Debt	289.1	306.9	363.9	324.0	271.7	280.1	276.6	275.7	260.2	211.6	132.0	221.0	232.1	230.4	184.1
Equity Warrants	1.1	1.2	1.3	1.1	0.0	0.0	0.1	0.2	1.0	3.8	4.6	5.2	5.6	4.6	4.5
Preferred Equity	14.2	9.0	5.7	5.7	10.2	8.4	7.7	6.8	5.9	6.1	5.3	5.4	6.6	6.2	6.1
Common Equity	12.3	11.6	11.2	10.6	9.3	9.2	16.2	18.0	18.9	24.5	62.7	71.7	83.2	81.1	78.2
LP/LLC Interests	29.0	26.0	25.8	21.9	12.5	10.8	8.3	12.4	13.1	21.9	21.9	23.7	23.4	25.6	29.5
Total Invested Assets at FMV	\$1,103.8	\$1,109.0	\$1,155.8	\$1,057.1	\$ 932.1	\$ 917.9	\$ 889.5	\$ 884.9	\$ 850.7	\$ 806.0	\$ 756.8	\$ 841.1	\$ 889.5	\$ 921.2	\$ 947.7
Weighted Average Yield ⁽¹¹⁾	12.4%	11.3%	11.3%	11.9%	11.0%	10.4%	10.4%	10.9%	11.2%	11.6%	10.5%	10.5%	10.9%	11.4%	11.5%
3-Month LIBOR	4.7%	2.7%	2.8%	3.9%	1.4%	1.2%	0.6%	0.3%	0.2%	0.3%	0.5%	0.3%	0.3%	0.3%	0.2%
Spread	7.7%	8.6%	8.5%	8.0%	9.6%	9.2%	9.8%	10.7%	11.0%	11.3%	10.0%	10.2%	10.6%	11.1%	11.3%
Total Net Assets	\$ 728.2	\$ 671.1	\$ 672.2	\$ 641.2	\$ 510.3	\$ 495.5	\$ 514.0	\$ 540.4	\$ 539.6	\$ 553.0	\$ 642.4	\$ 639.1	\$ 698.5	\$ 695.4	\$ 717.6
Total Net Assets and Liabilities	1,121.8	1,125.0	1,172.4	1,142.1	966.2	935.5	908.7	905.8	879.5	838.5	812.4	917.5	915.6	1,009.4	1,032.5
Borrowings⁽⁹⁾	381.3	444.9	484.0	491.0	426.0	421.5	376.0	347.5	296.0	253.5	145.0	205.5	170.0	275.0	275.0
Investment Income	\$ 35.4	\$ 35.7	\$ 34.9	\$ 37.4	\$ 35.2	\$ 31.8	\$ 33.4	\$ 29.4	\$ 30.3	\$ 27.8	\$ 28.2	\$ 24.8	\$ 25.0	\$ 25.2	\$ 37.1
Interest Expense	5.8	5.2	4.3	4.3	4.8	1.8	1.7	1.5	1.4	1.1	1.7	1.7	1.7	3.6	4.1
Other Expenses	1.8	1.7	1.7	1.7	1.1	1.5	1.6	1.5	2.5	1.6	1.9	2.2	1.9	2.2	2.4
Management Fee	5.6	5.6	5.6	5.8	5.7	4.7	4.6	4.6	4.6	4.3	4.2	4.1	4.4	4.5	4.9
Incentive Fee	-	-	-	-	-	-	-	-	16.8	0.5	-	-	14.6	-	-
Net Investment Income	\$ 22.1	\$ 23.2	\$ 23.3	\$ 25.6	\$ 23.5	\$ 23.8	\$ 25.5	\$ 21.8	\$ 5.0	\$ 20.3	\$ 20.4	\$ 16.8	\$ 2.4	\$ 14.9	\$ 25.7
Net Investment Income per share	\$ 0.43	\$ 0.44	\$ 0.44	\$ 0.47	\$ 0.42	\$ 0.43	\$ 0.46	\$ 0.39	\$ 0.09	\$ 0.36	\$ 0.36	\$ 0.26	\$ 0.03	\$ 0.20	\$ 0.35
Net Investment Income per share as adjusted ⁽⁷⁾						\$ 0.35	\$ 0.37	\$ 0.31	\$ 0.33	\$ 0.30	\$ 0.28	\$ 0.20	\$ 0.19	\$ 0.20	\$ 0.29
Net Investment Income per share before incentive fees	\$ 0.43	\$ 0.44	\$ 0.44	\$ 0.47	\$ 0.42	\$ 0.43	\$ 0.46	\$ 0.39	\$ 0.39	\$ 0.37	\$ 0.36	\$ 0.26	\$ 0.24	\$ 0.20	\$ 0.35
Earnings per share	\$ (0.31)	\$ (0.75)	\$ 0.22	\$ (0.34)	\$ (1.88)	\$ (0.07)	\$ 0.43	\$ 0.55	\$ 0.29	\$ 0.54	\$ 0.39	\$ 0.25	\$ 0.03	\$ 0.25	\$ 0.53
Dividends per share	\$ 0.43	\$ 0.43	\$ 0.43	\$ 0.43	\$ 0.43	\$ 0.16	\$ 0.16	\$ 0.16	\$ 0.32	\$ 0.32	\$ 0.32	\$ 0.32	\$ 0.32	\$ 0.32	\$ 0.26
Net Asset Value per share	\$ 13.78	\$ 12.60	\$ 12.31	\$ 11.52	\$ 9.23	\$ 9.04	\$ 9.24	\$ 9.59	\$ 9.55	\$ 9.77	\$ 9.83	\$ 9.76	\$ 9.62	\$ 9.56	\$ 9.83

Please see Notes to the Investor Presentation on page 22



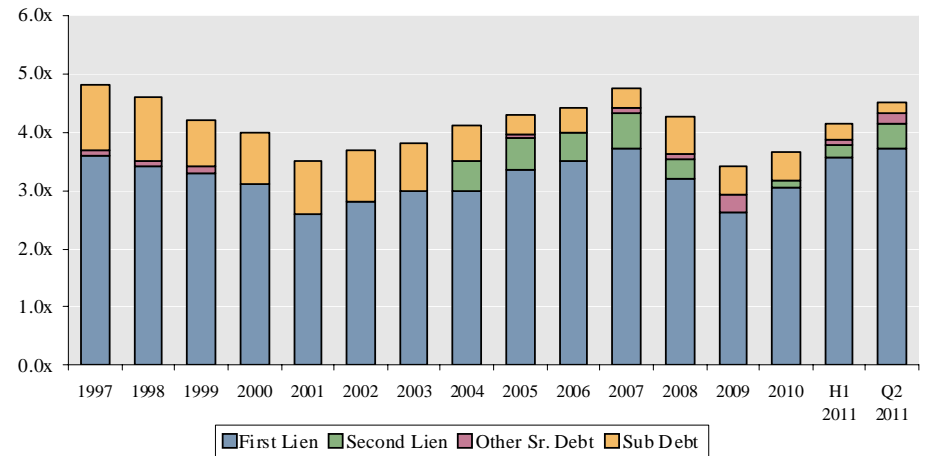
III. Current Market Environment

Leveraged Loan Investing Continues to Strengthen...

Average debt multiples for middle-market loans in 1H 2011 remained lower than previous highs during the pre-1999 and 2005-2007 time periods, but have rebounded significantly from 2009

- Total leverage for new transactions was 4.1x in 1H 2011, a significant increase from the 3.4x average in 2009 but below the 4.8x average in 2007
- Senior lending leverage (first lien, second lien, and other senior debt) was 3.9x in H1 2011, versus 4.4x in 2007 and an average of 3.4x from 2001 – 2009
 - Senior leverage consisted of 93.0% of total debt in 1H 2011, a significant increase from the 2000 – 2009 average of 83.1%

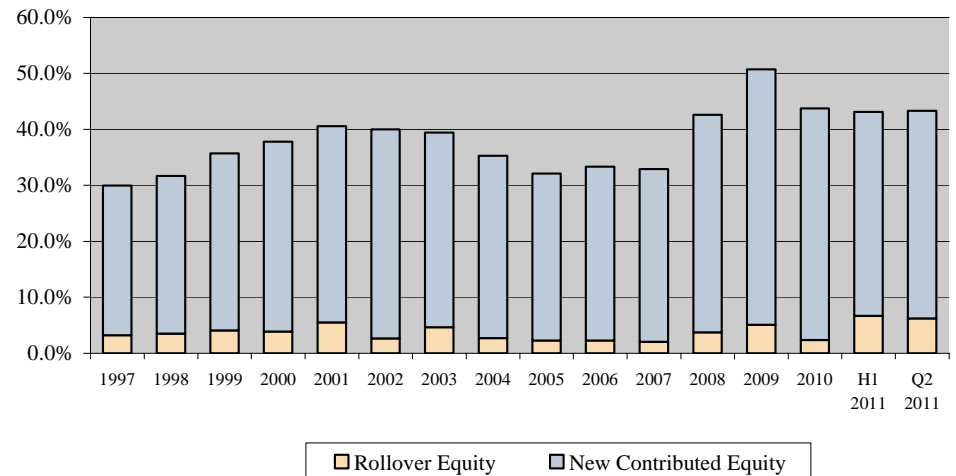
Average Debt Multiples of Middle-Market Loans



Equity contribution levels to leveraged buyouts were slightly above historical averages in 1H 2011

- Total contributed equity to new LBO transactions in 1H1 2011 represented 43.1% of capital versus an average of 38.5% over the past decade
 - Total contributed equity to LBO transaction peaked in 2009 at 50.8% of capital
- Equity contribution levels remain approximately ten percentage points higher than those required during the 2005-2007 period

Average Equity Contribution to Leveraged Buyouts



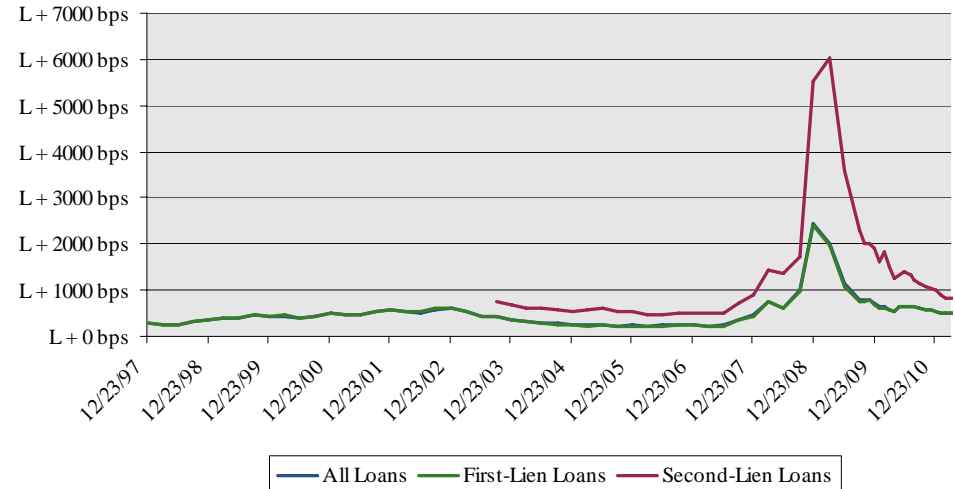
Source: Standard & Poor's LCD Leveraged Lending Review 2Q 2011

Pricing on Leveraged Loans has Narrowed...

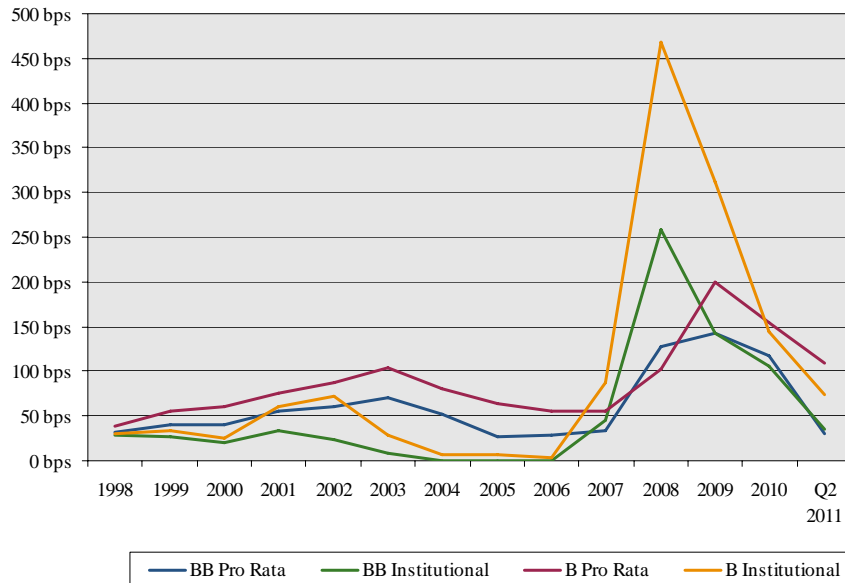
Pricing on leveraged loans across the capital structure has narrowed significantly since March 2009

- Leveraged loan spreads, average upfront fees, and commitment fees are all below the 2000 – 2009 average, but greater than the 2005 – 2007 average

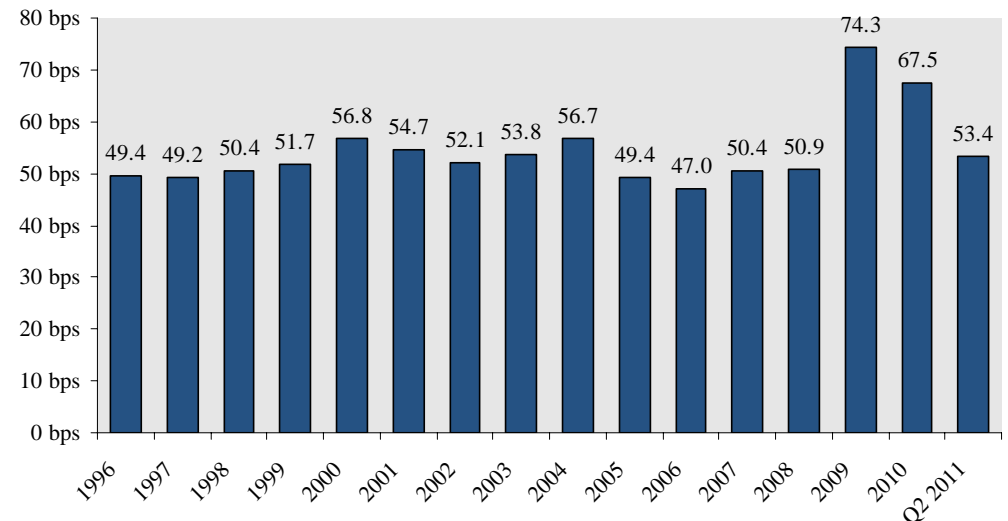
Average Discounted Spread of Leveraged Loans



Average Upfront Fees on New Issue Leveraged Loans by Rating⁽¹²⁾



Average Initial Financing Commitment Fee



Source: Standard & Poor's LCD Leveraged Lending Review 2Q 2011

Please see Notes to the Investor Presentation on page 22

However, the Middle Market Offers More Attractive Opportunities For Investors

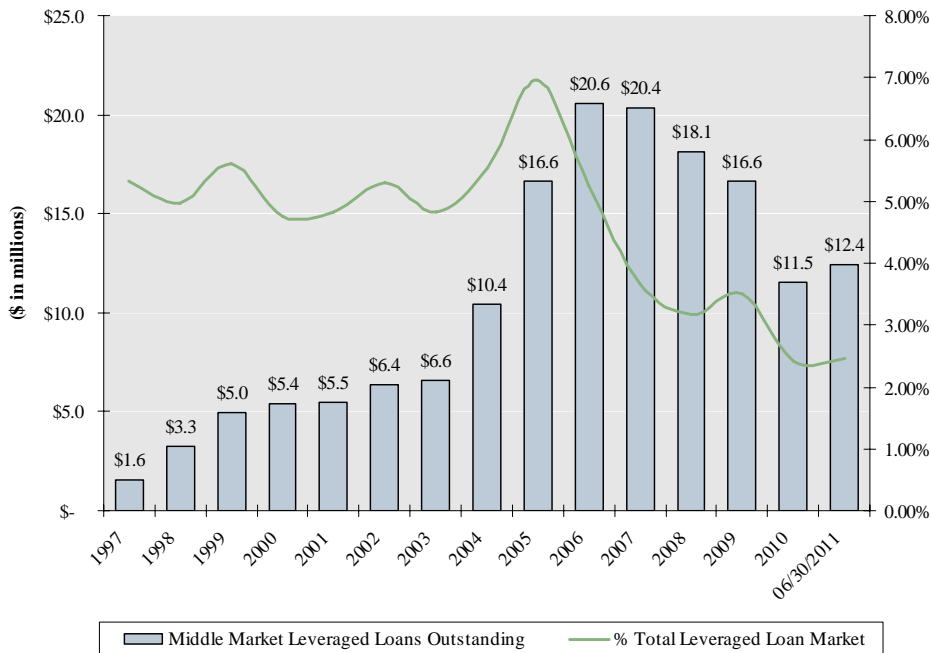
General Characteristics

- ✓ Typically \$50 million to \$1 billion in revenues
- ✓ Fundamental credit analysis comparatively more important
- ✓ If rated, rating agencies likely assign lower rating
- ✓ Middle-market investments typically include inherent structural and credit protections
- ✓ High level of acquisition activity (realization opportunities)

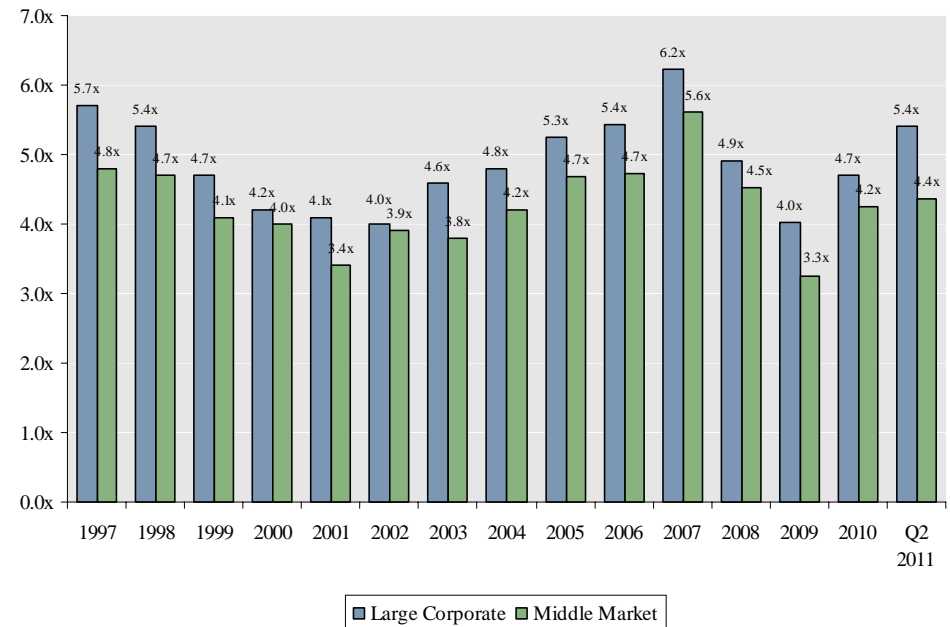
Benefits

- ✓ Attractive yields
- ✓ Conservative capital structures
- ✓ Strong recovery rates
- ✓ Smaller investor groups and active lender involvement
- ✓ Involvement of equity sponsors
- ✓ Issuer diversification

Middle Market Leveraged Loans Overview



Average Debt Multiples of LBO Loans



Source: Standard & Poor's LCD High End Middle Market Lending Review 2Q 2011



IV. Notes to the Investor Presentation

Notes to the Investor Presentation

(1) As of June 30, 2011

(2) Dividend amount includes Q3 2011 dividend of \$0.26 declared on August 4, 2011 to be paid on October 3, 2011

(3) Income statement data per share utilizes basic and diluted weighted average shares outstanding during the relevant period

(4) Balance sheet per share data utilizes total shares outstanding at end of period

(5) Calculations are net of unearned income, as represented in public filings

(6) Total investment portfolio excludes cash and cash equivalents and is gross of unearned income for periods prior to Q1 2011

(7) BKCC's "as adjusted" results are non-GAAP financial measures that reflect incentive management fees based on the formula BKCC utilizes for calculating the actual full year incentive fee, with the formula applied to quarterly results. The fourth quarter's adjusted amount was calculated by taking the actual full year net investment income and subtracting the first three quarters of adjusted net investment income, and has been provided in order to show net investment income as if the maximum quarterly incentive fees had been paid during the preceding three quarters. Please refer to BKCC's Quarterly Report on form 10-Q for the quarter ended June 30, 2011 for additional information on these non-GAAP financial measures

(8) Book debt adjusted for cash and cash equivalents

(9) Borrowings consists of debt, as listed in public filings

(10) Represents date of original investment or date of subsequent amendment if amendment resulted in a re-pricing of the original investment terms

(11) Yield on invested capital for all debt or income-producing securities on a cost basis

(12) Original issue discounts are included in upfront fees, beginning in 2001

(13) Asset coverage ratio was 356% as of June 30, 2011