

Investor Presentation

April 2016

BLACKROCK CAPITAL
INVESTMENT CORPORATION

Important Notice

These materials and any presentation of which they form a part are neither an offer to sell, nor a solicitation of an offer to purchase, any securities of BlackRock Capital Investment Corporation (“BKCC,” the “Company”). The summary descriptions and other information included herein, and any other materials provided to you by the Company or its representatives, are intended only for informational purposes and convenient reference. The information contained herein is not intended to provide, and should not be relied upon for, accounting, legal or tax advice or investment recommendations.

Recipients may not reproduce these materials or transmit them to third parties. These materials are not intended for distribution to or use by any person or entity in any jurisdiction or country where such distribution or use would be contrary to applicable law or regulations.

This presentation contains “forward looking statements” within the meaning of Section 21E of the Securities Exchange Act of 1934, as amended, that are subject to risks and uncertainties. Actual outcomes and results could differ materially from those suggested by this presentation due to the impact of many factors beyond the control of the Company, including those listed in the “Risk Factors” section of our filings with the Securities and Exchange Commission (“SEC”). Any such forward-looking statements are made pursuant to the safe harbor provisions available under applicable securities laws and BlackRock Capital Investment Corporation assumes no obligation to update or revise any such forward-looking statements.

Certain information discussed in this presentation was derived from third party sources and has not been independently verified and, accordingly, the Company makes no representation or warranty in respect of this information.

The following slides contain summaries of certain financial and statistical information about the Company. The information contained in this presentation is summary information that is intended to be considered in the context of our SEC filings and other public announcements that we may make, by press release or otherwise, from time to time. In addition, information related to past performance, while helpful as an evaluative tool, is not necessarily indicative of future results, the achievement of which cannot be assured. You should not view the past performance of the Company, or information about the market, as indicative of the Company’s future results.

Overview Q1 2016

As of and for the Three Months Ended March 31, 2016

- ▶ Investment Portfolio: \$1,126.4mm
- ▶ Net Assets: \$689.3mm or \$9.46 per share
- ▶ Net Investment Income¹: \$17.5mm or \$0.24 per share
- ▶ Net Investment Income, as adjusted^{1,3}: \$17.5mm or \$0.24 per share
- ▶ Purchases of Investments²: \$97.5mm
- ▶ Sales, Repayments and Other Exits: \$32.9mm
- ▶ Average Investment by Portfolio Company, at Amortized Cost⁴: \$32.5mm
- ▶ Indebtedness: \$442.5mm
- ▶ Credit Facility Availability: \$144.0mm
- ▶ Asset Coverage Ratio: 255%
- ▶ Evaluated approximately 3,500 investment opportunities since inception
- ▶ Completed investments in 178 portfolio companies since inception
- ▶ Approximately \$4.3 billion in capital provided to middle-market companies since inception

Please see Notes to the Investor Presentation on page 16.

Financial Highlights

As of and for the Three Months Ended	6/30/14	9/30/14	12/31/14	3/31/15	6/30/15	9/30/15	12/31/15	3/31/16
(\$mm, except per share data)								
Net Investment Income per share, as adjusted ^{1,3}	\$ 0.23	\$ 0.23	\$ 0.26	\$ 0.21	\$ 0.23	\$ 0.24	\$ 0.29	\$ 0.24
Net Realized / Unrealized Gains (Losses) per share ¹	0.19	0.13	0.68	0.11	(0.05)	(0.03)	(0.53)	(0.76)
Net Increase / (Decrease) in Net Assets per share, as adjusted ^{1,3}	0.42	0.36	0.95	0.32	0.18	0.21	(0.23)	(0.52)
Net Asset Value per share ⁵	9.79	9.97	10.49	10.58	10.56	10.66	10.17	9.46
Distributions Declared per share	\$ 0.21	\$ 0.21	\$ 0.21	\$ 0.21	\$ 0.21	\$ 0.21	\$ 0.21	\$ 0.21
Weighted Average Shares Outstanding - Basic ¹	74.5	74.6	74.5	74.7	74.8	74.7	74.2	73.1
Shares Outstanding at End of Period	74.4	74.6	74.5	74.7	74.8	74.2	74.1	72.9

(\$mm)	6/30/14	9/30/14	12/31/14	3/31/15	6/30/15	9/30/15	12/31/15	3/31/16
Investment Portfolio at Cost ⁷	\$ 941.9	\$ 968.0	\$ 1,134.3	\$ 1,114.2	\$ 1,085.4	\$ 1,154.4	\$ 1,153.1	\$ 1,219.0
Investment Portfolio at Fair Value ⁷	\$ 1,019.4	\$ 1,053.8	\$ 1,257.7	\$ 1,235.6	\$ 1,085.1	\$ 1,149.8	\$ 1,117.0	\$ 1,126.4
Fair Value % Cost	108.2%	108.9%	110.9%	110.9%	100.0%	99.6%	96.9%	92.4%
Number of Portfolio Companies	44	42	47	45	42	43	45	47
Average Investment Size at Cost	\$ 21.4	\$ 23.0	\$ 24.1	\$ 24.8	\$ 25.8	\$ 26.8	\$ 25.6	\$ 25.9
Yield on Income Producing Securities at Cost	11.9%	11.8%	11.6%	11.5%	11.5%	11.5%	11.0%	9.8%
Yield on Senior Secured Loans at Cost	11.4%	11.4%	11.2%	11.1%	11.1%	11.1%	11.0%	9.2%
Yield on Other Debt Securities at Cost	12.9%	13.0%	12.5%	12.7%	12.6%	12.6%	11.2%	11.4%

Please see Notes to the Investor Presentation on page 16.

Select Historical Financial Information

\$ in thousands, except per share data										Full Year	
	6/30/14	9/30/14	12/31/14	3/31/15	6/30/15	9/30/15	12/31/15	3/31/16	12/31/14	12/31/15	
Net Investment Income	\$ 16,431	\$ 19,332	\$ 3,514	\$ 14,624	\$ 18,238	\$ 23,795	\$ 18,534	\$ 17,478	\$ 50,372	\$ 75,191	
Net Investment Income per share ¹	0.22	0.26	0.05	0.20	0.24	0.32	0.25	0.24	0.68	1.01	
Net Investment Income, pre-incentive fee ³	19,400	19,926	23,997	16,001	17,895	19,570	18,534	17,478	77,878	72,002	
Net Investment Income per share, pre-incentive fee ^{1,3}	0.26	0.27	0.32	0.21	0.24	0.26	0.25	0.24	1.04	0.97	
Net Investment Income, as adjusted ³	16,823	17,313	19,492	15,713	16,825	17,748	21,704	17,478	67,905	71,991	
Net Investment Income per share, as adjusted ^{1,3}	0.23	0.23	0.26	0.21	0.23	0.24	0.29	0.24	0.91	0.97	
Net Realized / Unrealized Gains (Losses)	14,436	9,637	50,973	8,032	(3,500)	(2,067)	(39,031)	(55,653)	86,868	(36,566)	
Net Realized / Unrealized Gains (Losses) per share ¹	0.19	0.13	0.68	0.11	(0.05)	(0.03)	(0.53)	(0.76)	1.17	(0.49)	
Net Increase / (Decrease) in Net Assets	30,867	28,970	54,487	22,656	14,738	21,728	(20,496)	(38,175)	137,240	38,625	
Net Increase / (Decrease) in Net Assets per share ¹	0.41	0.39	0.73	0.30	0.20	0.29	(0.28)	(0.52)	1.84	0.52	
Distributions Declared	15,634	15,657	15,655	15,681	15,703	15,661	15,561	15,300	66,321	62,606	
Distributions Declared per share ⁵	0.21	0.21	0.21	0.21	0.21	0.21	0.21	0.21	0.89	0.84	
Net Assets	728,960	743,229	781,959	789,905	789,833	790,672	753,753	689,322	781,959	753,753	
Net Asset Value per share ⁵	\$ 9.79	\$ 9.97	\$ 10.49	\$ 10.58	\$ 10.56	\$ 10.66	\$ 10.17	\$ 9.46	\$ 10.49	\$ 10.17	
Debt / Equity	0.45x	0.48x	0.57x	0.60x	0.39x	0.48x	0.48x	0.64x	0.57x	0.48x	
Debt / Equity, Net ⁶	0.34x	0.39x	0.55x	0.53x	0.33x	0.45x	0.47x	0.63x	0.55x	0.47x	

Please see Notes to the Investor Presentation on page 16.

Portfolio Composition

Portfolio Purchases by Investment Type

(\$mm)	6/30/14	9/30/14	12/31/14	3/31/15	6/30/15	9/30/15	12/31/15	3/31/16
Senior Secured Loans - 1st Lien	\$ 46.5	\$ 86.0	\$ 79.7	\$ 5.9	\$ 59.3	\$ 13.3	\$ 0.2	\$ 0.2
Senior Secured Notes	20.8	-	-	-	7.5	-	-	36.8
Senior Secured Loans - 2nd Lien	5.9	45.0	51.8	26.0	7.0	47.4	73.9	39.3
Subordinated / Unsecured Debt	4.7	7.9	71.6	10.3	5.4	14.0	19.0	18.2
Preferred Equity	4.1	3.2	13.6	3.8	6.0	2.0	0.6	0.7
Common Equity	5.2	-	10.9	-	4.9	-	-	-
LP/LLC Interests	3.3	-	8.0	0.3	0.2	0.2	4.6	2.3
Equity Warrants	-	0.5	-	-	-	-	-	-
New Investments at Cost ²	\$ 90.5	\$ 142.6	\$ 235.6	\$ 46.3	\$ 90.3	\$ 76.9	\$ 98.3	\$ 97.5

Net Investments

(\$mm)	6/30/14	9/30/14	12/31/14	3/31/15	6/30/15	9/30/15	12/31/15	3/31/16
New Investments at Cost ²	\$ 90.5	\$ 142.6	\$ 235.6	\$ 46.3	\$ 90.3	\$ 76.9	\$ 98.3	\$ 97.5
Sales, Repayments, Other Exits at Cost	(193.1)	(118.4)	(83.8)	(75.0)	(238.6)	(10.8)	(93.4)	(32.9)
Net New Investments at Cost	\$ (102.6)	\$ 24.2	\$ 151.8	\$ (28.7)	\$ (148.3)	\$ 66.1	\$ 4.9	\$ 64.6
Number of New Portfolio Company Investments	3	3	8	1	1	1	4	3
Number of Portfolio Company Exits	5	5	3	3	4	-	2	1

Please see Notes to the Investor Presentation on page 16.

Portfolio Composition (Cont'd)

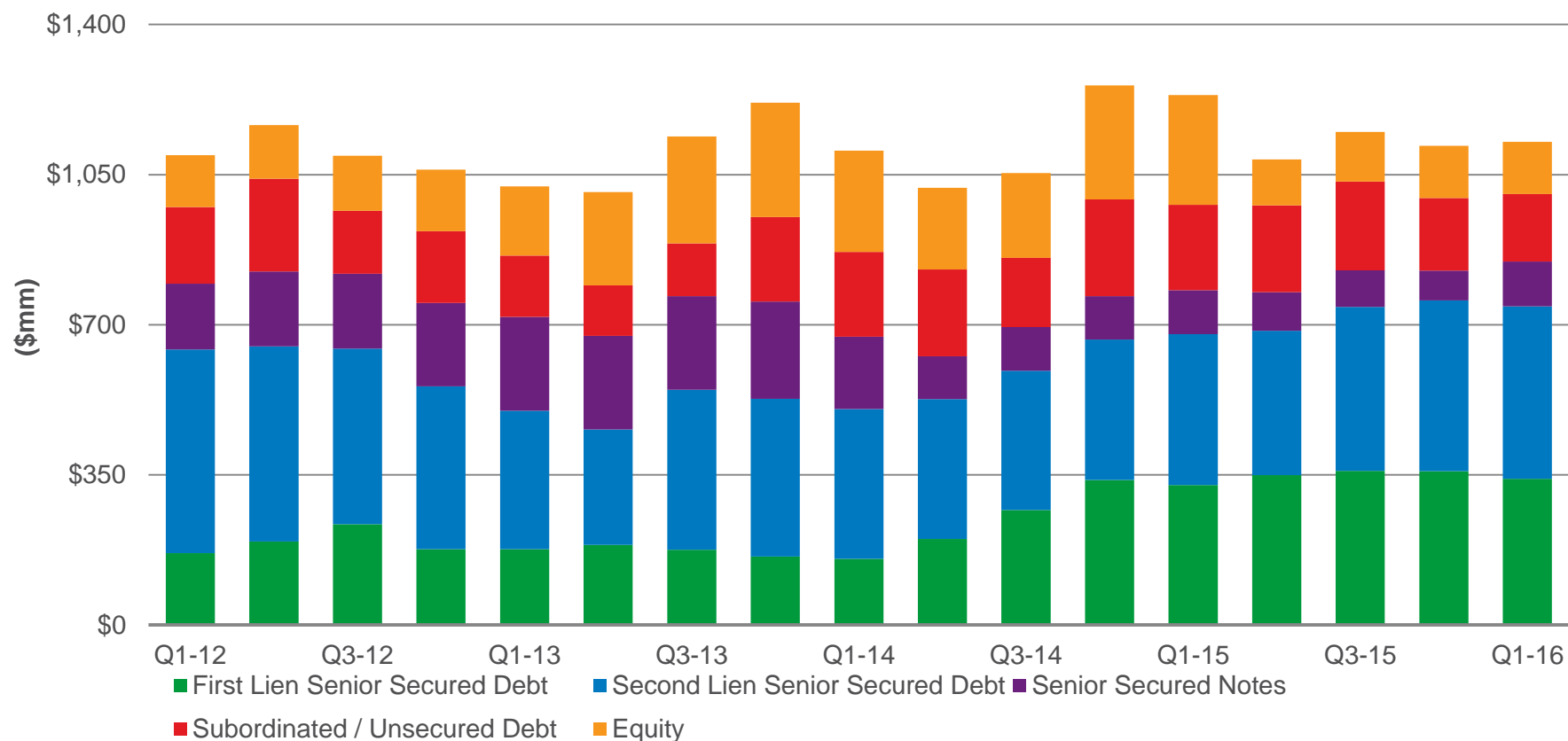
(\$mm)	6/30/14	9/30/14	12/31/14	3/31/15	6/30/15	9/30/15	12/31/15	3/31/16
Senior Secured Loans	\$ 526.2	\$ 592.4	\$ 665.3	\$ 678.2	\$ 686.0	\$ 741.3	\$ 756.4	\$ 742.7
Senior Secured Notes	100.5	102.1	101.5	102.5	89.8	85.7	69.9	104.4
Subordinated / Unsecured Debt	202.1	161.5	225.1	198.8	202.6	206.7	169.1	157.5
Preferred Equity	34.1	29.3	40.5	44.5	38.8	40.4	43.5	50.7
Common Equity	72.5	78.8	107.0	97.4	41.2	49.2	46.6	42.0
LP/LLC Interests	75.4	79.4	98.6	92.9	24.0	23.7	28.6	27.5
Equity Warrants	8.6	10.2	19.8	21.4	2.8	2.8	2.9	1.6
Investment Portfolio at FV⁷	\$ 1,019.4	\$ 1,053.8	\$ 1,257.7	\$ 1,235.6	\$ 1,085.1	\$ 1,149.8	\$ 1,117.0	\$ 1,126.4

Investment Portfolio %'s	6/30/14	9/30/14	12/31/14	3/31/15	6/30/15	9/30/15	12/31/15	3/31/16
Senior Secured Loans	51.7%	56.2%	52.9%	54.9%	63.1%	64.5%	67.7%	65.9%
Senior Secured Notes	9.9%	9.7%	8.1%	8.3%	8.3%	7.5%	6.3%	9.3%
Subordinated / Unsecured Debt	19.8%	15.3%	17.9%	16.1%	18.7%	18.0%	15.1%	14.0%
Preferred Equity	3.3%	2.8%	3.2%	3.6%	3.6%	3.5%	3.9%	4.5%
Common Equity	7.1%	7.5%	8.5%	7.9%	3.8%	4.3%	4.2%	3.7%
LP/LLC Interests	7.4%	7.5%	7.8%	7.5%	2.2%	2.1%	2.5%	2.4%
Equity Warrants	0.8%	1.0%	1.6%	1.7%	0.3%	0.2%	0.3%	0.1%

Please see Notes to the Investor Presentation on page 16.

Portfolio Composition (Cont'd)

Portfolio Composition by Investment Type¹

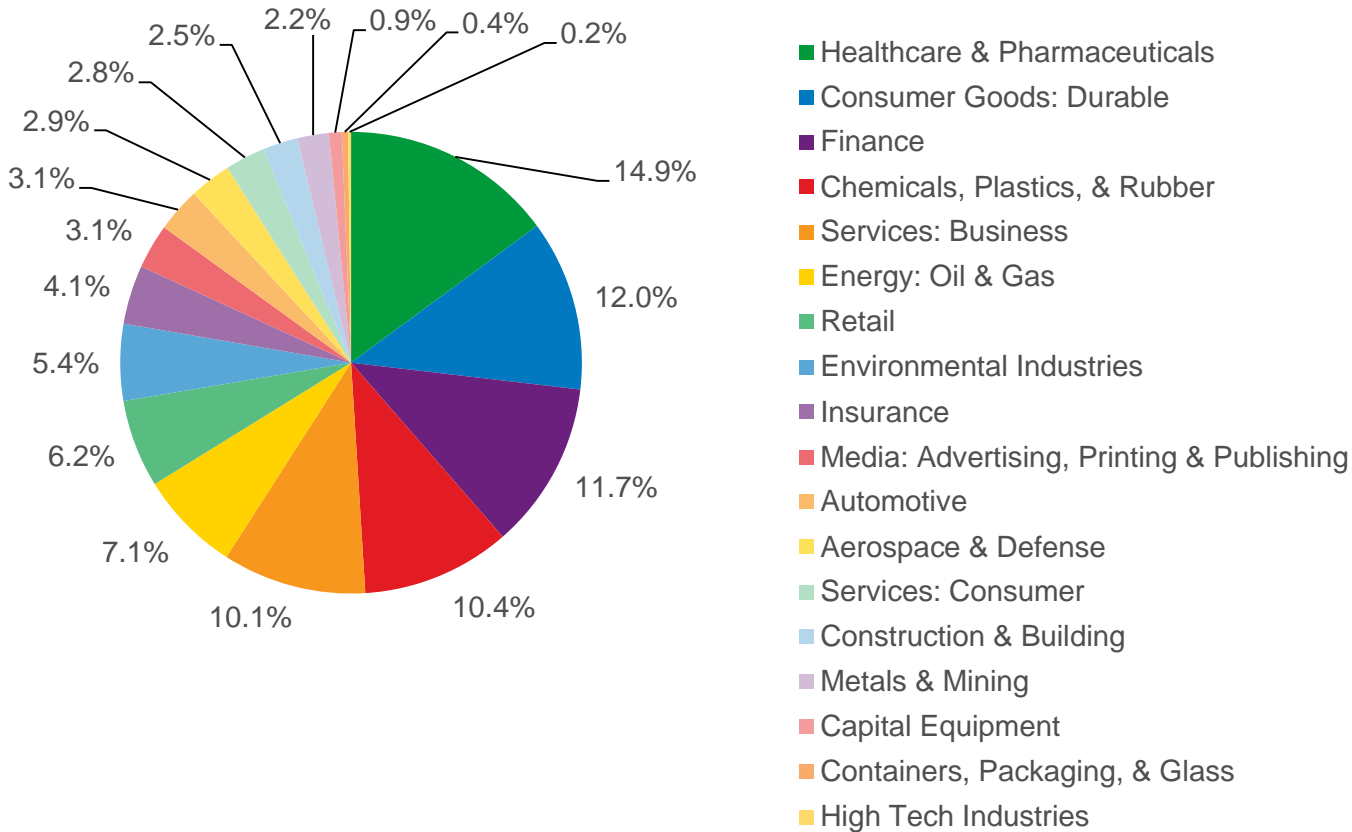


▶ As of March 31, 2016, senior debt comprised 75.2% of the total investment portfolio⁷ at fair market value.

Please see Notes to the Investor Presentation on page 16.

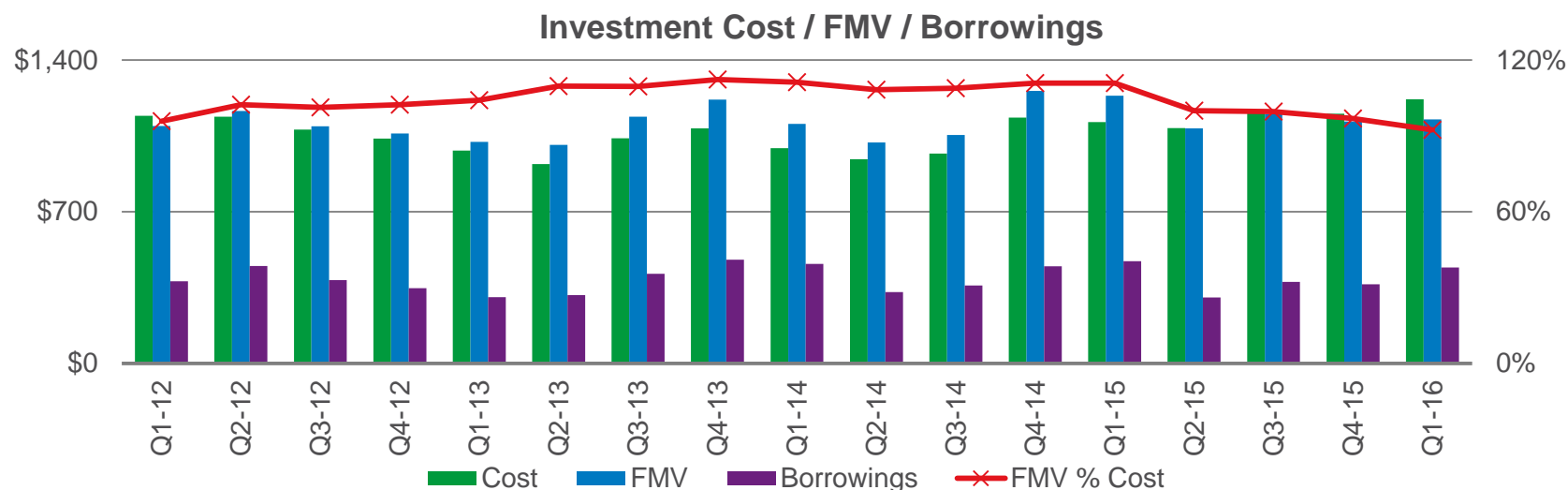
Portfolio Composition (Cont'd)

Portfolio Composition by Industry at Fair Market Value



Portfolio Evolution

Investment Cost / FMV / Borrowings⁸

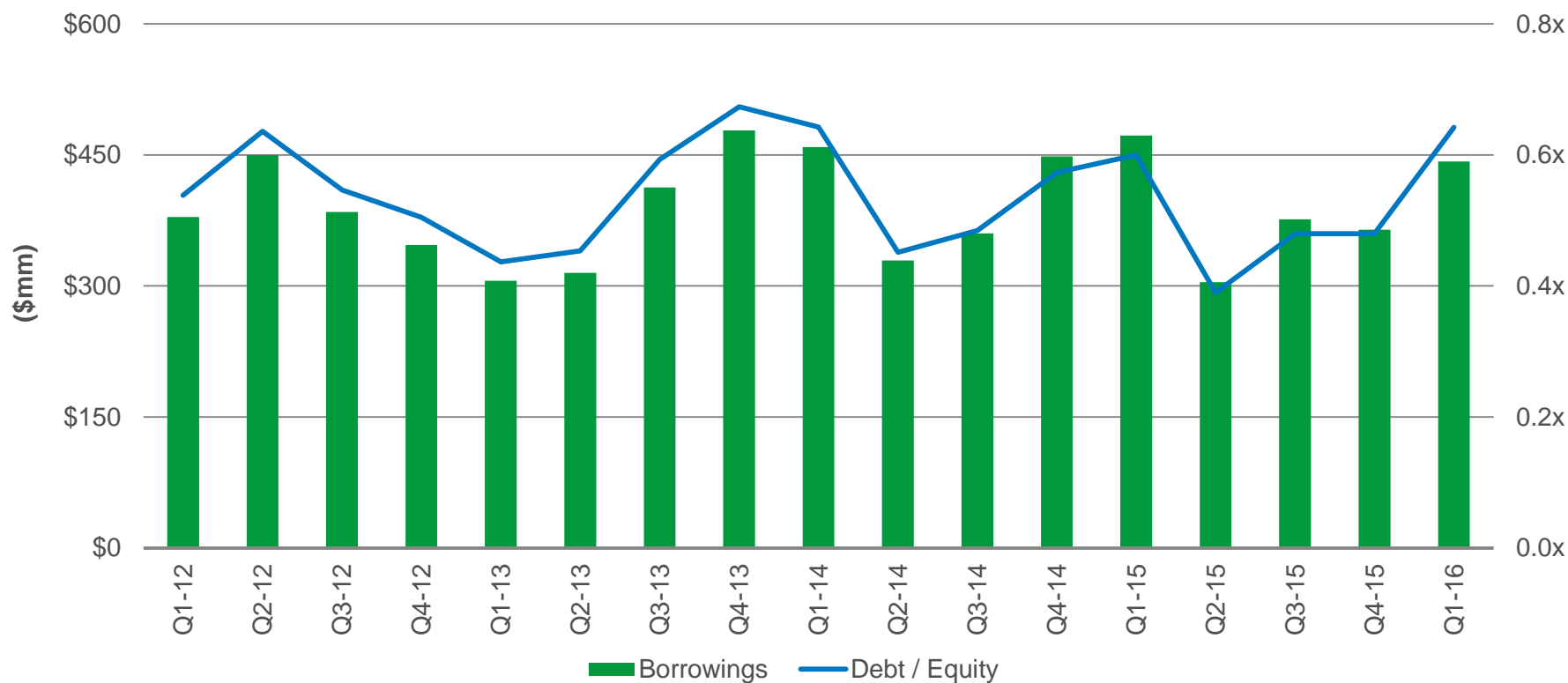


	2012	Q1-13	Q2-13	Q3-13	Q4-13	Q1-14	Q2-14	Q3-14	Q4-14	Q1-15	Q2-15	Q3-15	Q4-15	Q1-16
Cost	\$1,037.3	\$982.3	\$919.6	\$1,039.2	\$1,084.5	\$993.8	\$941.9	\$968.0	\$1,134.3	\$1,114.2	\$1,085.4	\$1,154.4	\$1,153.1	\$1,219.0
FMV	1,061.6	1,022.8	1,009.2	1,139.1	1,218.0	1,106.1	1,019.4	1,053.8	1,257.7	1,235.6	1,085.1	1,149.8	1,117.0	1,126.4
Borrowings	346.9	305.8	314.9	412.9	478.0	459.0	329.1	360.2	448.2	472.3	304.3	376.4	364.5	442.5
FMV % Cost	102.3%	104.1%	109.7%	109.6%	112.3%	111.3%	108.2%	108.9%	110.9%	110.9%	100.0%	99.6%	96.9%	92.4%
Borrowings % FMV	32.7%	29.9%	31.2%	36.2%	39.2%	41.5%	32.3%	34.2%	35.6%	38.2%	28.0%	32.7%	32.6%	39.3%
NAV per share	\$ 9.31	\$ 9.47	\$ 9.37	\$ 9.38	\$ 9.54	\$ 9.59	\$ 9.79	\$ 9.97	\$ 10.49	\$ 10.58	\$ 10.56	\$ 10.66	\$ 10.17	\$ 9.46
Share Price	\$ 10.06	\$ 10.00	\$ 9.36	\$ 9.48	\$ 9.33	\$ 9.17	\$ 9.11	\$ 8.54	\$ 8.20	\$ 9.06	\$ 9.14	\$ 8.86	\$ 9.40	\$ 9.41
Share Price / NAV per share	108.1%	105.6%	99.9%	101.1%	97.8%	95.6%	93.0%	85.7%	78.2%	85.6%	86.6%	83.1%	92.4%	99.5%

Please see Notes to the Investor Presentation on page 16.

Asset Coverage

Quarterly Borrowings⁸



- ▶ Asset coverage ratio of 255%; \$245.4mm in excess availability
- ▶ Credit facility availability of \$144.0mm

Please see Notes to the Investor Presentation on page 16.

Reconciliation of Net Investment Income

	Q1 2015		Q2 2015		Q3 2015		Q4 2015		2015		Q1 2016	
	\$'s	per share	\$'s	per share	\$'s	per share	\$'s	per share	\$'s	per share	\$'s	per share
GAAP Basis:												
Net Investment Income	\$ 14,623,577	\$ 0.20	\$ 18,237,907	\$ 0.24	\$ 23,795,150	\$ 0.32	\$ 18,534,409	\$ 0.25	\$ 75,191,043	\$ 1.01	\$ 17,478,249	\$ 0.24
Net Increase / (Decrease) in Net Assets from Operations	22,655,619	0.30	14,738,001	0.20	21,727,828	0.29	(20,496,364)	(0.28)	38,625,084	0.52	(38,174,769)	(0.52)
Addback: GAAP incentive management fee expense based on Gains	1,366,846	0.02	(342,635)	(0.00)	(4,224,731)	(0.06)	-	-	(3,200,520)	(0.04)	-	-
Addback: GAAP incentive management fee expense based on Income	11,061	0.00	-	-	-	-	-	-	11,061	0.00	-	-
Pre-Incentive Fee¹												
Net Investment Income	16,001,484	0.21	17,895,272	0.24	19,570,419	0.26	18,534,409	0.25	72,001,584	0.97	17,478,249	0.24
Net Increase / (Decrease) in Net Assets from Operations	24,033,526	0.32	14,395,366	0.19	17,503,097	0.23	(20,496,364)	(0.28)	35,435,625	0.48	(38,174,769)	(0.52)
Less: Incremental incentive management fee expense based on Income	(288,268)	(0.00)	(1,070,228)	(0.01)	(1,821,960)	(0.02)	3,169,395	0.04	(11,061)	(0.00)	-	-
As Adjusted²												
Net Investment Income	15,713,216	0.21	16,825,044	0.23	17,748,459	0.24	21,703,804	0.29	71,990,523	0.97	17,478,249	0.24
Net Increase / (Decrease) in Net Assets from Operations	\$ 23,745,258	\$ 0.32	\$ 13,325,138	\$ 0.18	\$ 15,681,137	\$ 0.21	\$ (17,326,969)	\$ (0.23)	\$ 35,424,564	\$ 0.48	\$ (38,174,769)	\$ (0.52)

Please see Notes to the Investor Presentation on page 16.

Middle Market Opportunity

The Middle Market Offers More Attractive Opportunities for Investors

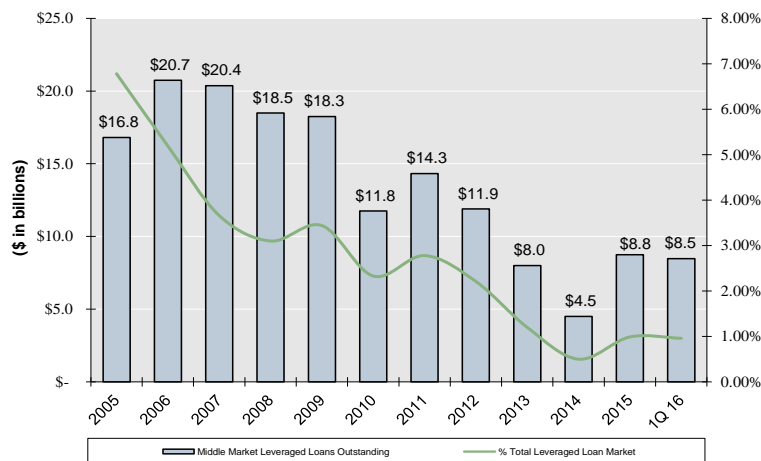
General Characteristics

- ▶ Typically \$50mm–\$1bn in revenues
- ▶ Fundamental credit analysis comparatively more important
- ▶ If rated, rating agencies likely assign lower rating
- ▶ Middle-market investments typically include inherent structural and credit protections
- ▶ High level of acquisition activity (realization opportunities)

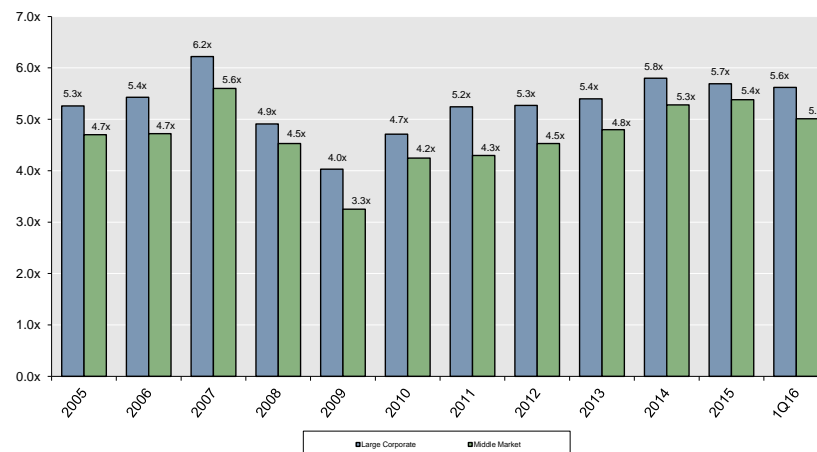
Benefits

- ▶ Attractive yields
- ▶ Conservative capital structures
- ▶ Strong recovery rates
- ▶ Smaller investor groups and active lender involvement
- ▶ Involvement of equity sponsors
- ▶ Issuer diversification

Middle Market Leveraged Loans Outstanding



Average Debt Multiples of LBO Loans



Source: Standard & Poor's LCD High End Middle Market Lending Review Q1 2016.

Notes to the Investor Presentation

Notes to the Investor Presentation

1. Income statement data per share excludes the impact of diluted weighted average shares outstanding.
2. Includes PIK interest and dividends earned during the period presented.
3. **Net Investment Income, as adjusted:** Amounts are adjusted to remove the incentive management fee expense based on gains, as required by GAAP, and to include only the incremental incentive management fee expense based on income. The incremental incentive management fee is calculated based on the current quarter's incremental earnings, and without any reduction for incentive management fees paid during the prior calendar quarters. Amounts reflect the Company's ongoing operating results and reflect the Company's financial performance over time.
Pre-Incentive Fee: Amounts are adjusted to remove all incentive management fees. Such fees are calculated but not necessarily due and payable at this time.
4. Excludes portfolio company investments below \$5.0mm, at amortized cost.
5. Balance sheet per share data utilizes total shares outstanding at end of period.
6. Debt adjusted for available cash, receivables for investments sold and payables for investments purchased.
7. Total investment portfolio excludes cash and cash equivalents.
8. Borrowings consist of debt, as listed in public filings.

Note: Schedules may differ from public financials due to rounding.